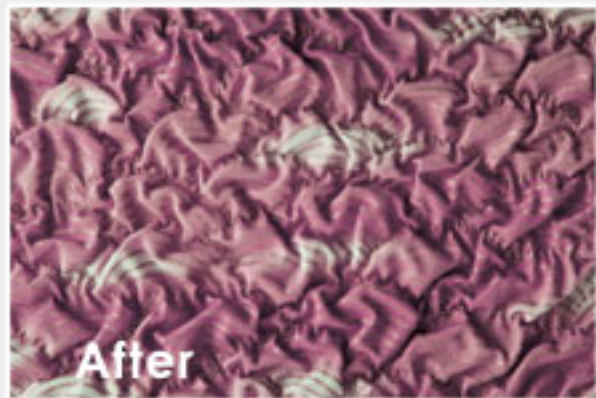
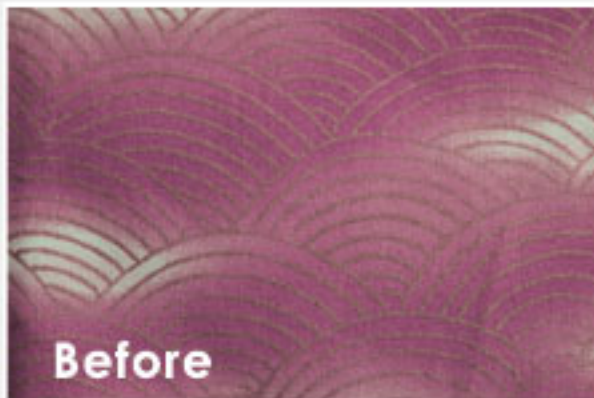


**NEW!**



**Magically texturize your fabric using only your steam iron!**



**Fabric Shrinks 30% in all Directions**



[www.superiorthreads.com](http://www.superiorthreads.com)

1



Mark stitching lines on the Texture Magic™. (either side)

**Note:** Do not be tempted to iron the wrinkles out of your Texture Magic™. They will disappear after they are steamed.

2



Pin the Texture Magic™ to the wrong side of your fabric.

**Note:** Add batting between the layers during this step if so desired. Batting will give the texture extra loft.

3



Sew along marked lines.

**Note:** The closer the sewing lines, the more texture will be created.

4



Thoroughly steam with the Texture Magic™ side up.

**Note:** The fabric will start to pull up during the shrinking process. When the process is complete the fabric will lie flat. **DO NOT TOUCH THE IRON TO THE FABRIC.**

Size  
47" x 18"

[www.superiorthreads.com](http://www.superiorthreads.com)



8 102330 173514